

**DELTABLOC®**  
SAFETY BARRIERS

# DB 80A 6m T150S ZDC

## H2 W2 B

anchored on concrete

**K733149A**

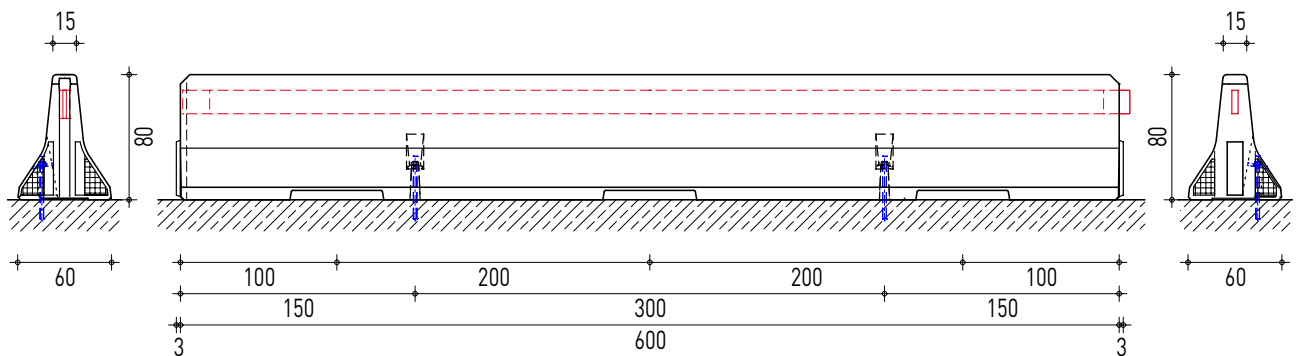
### PRODUCT DATA SHEET

Performance class	H2 W2 B
Working width	0,8 m
Vehicle intrusion	VI1 (0,6 m)
Dynamic deflection	0,20 m
Tested system length	78 m
EC Certification report	88452

System series	DB 80 Series
Tension bar	T150S
Design	Generation 2
Product variant	ZDC

Element length	600 cm
Element height	80 cm
Element width	60 cm
Element weight / length	3.125 kg / 6 m

Mode of operation	double sided
Mode of installation	anchored on concrete
Terminal anchoring	no
Installation drawing	K733149-EN



# THE NEW DB 80 SERIES PROTECTS WITH MODULAR SAFETY

The holistic H2 safety concept  
for the central reserve, verge and bridge.



**KIRCHDORFER**  
ROAD & TRAFFIC

## **DELTABLOC®**

### **DELTABLOC INTERNATIONAL GMBH**

Industriestrasse 28  
2601 Sollenau, Austria  
office@deltabloc.com  
+43 57715 / 470 – 0  
deltabloc.com

## **HOME OF ROAD SAFETY**