

# DB 80 F-Shape 6m T150S

## TL3 W5 C

surface mounted on asphalt

**K732077A**

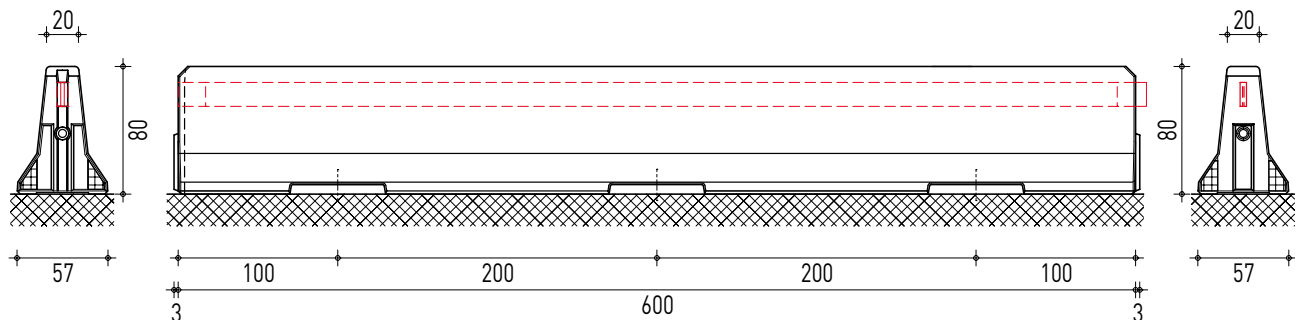
### PRODUCT DATA SHEET

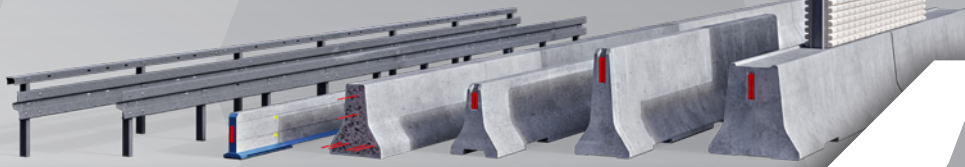
Performance class	TL3 W5 C
Working width	1,4 m
Vehicle intrusion	- (- m)
Dynamic deflection	0,8 m
Tested system length	84 m
EC Certification report	

System series	DB 80 Series
Tension bar	T150S
Design	Generation 2

Element length	6 m
System height	80 cm
System width	57 cm
Element weight/length	3.125 kg/6 m

Mode of operation	double sided
Mode of installation	surface mounted on asphalt
Additional features	lifting holes
Terminal anchoring	yes
Installation drawing	K732077-EN





# DB 80 F-Shape 6m T150S

## TL4 W5 C

surface mounted on asphalt

**K732077B**

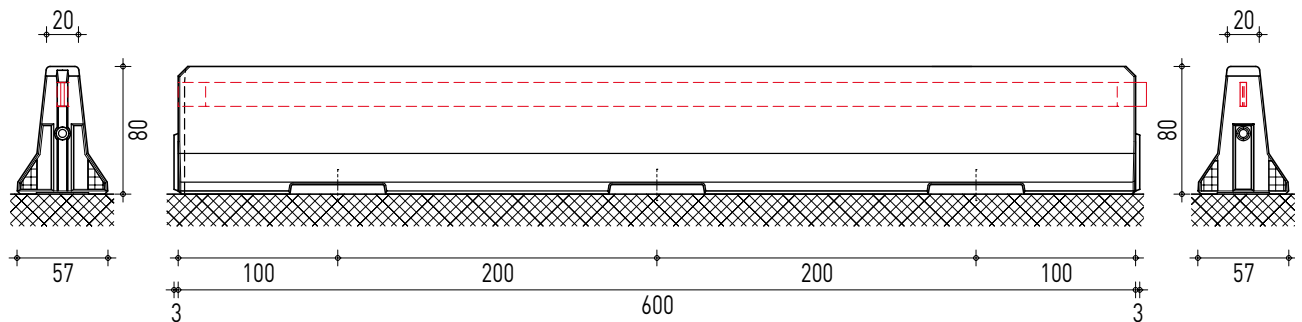
### PRODUCT DATA SHEET

Performance class	TL4 W5 C
Working width	1,4 m
Vehicle intrusion	- (- m)
Dynamic deflection	0,8 m
Tested system length	84 m
EC Certification report	-

System series	DB 80 Series
Tension bar	T150S
Design	Generation 2

Element length	6 m
System height	80 cm
System width	57 cm
Element weight/length	3.125 kg/6 m

Mode of operation	double sided
Mode of installation	surface mounted on asphalt
Additional features	lifting holes
Terminal anchoring	yes
Installation drawing	K732077-EN



# THE DB F-SHAPE SERIES PROTECTS WITH BEST PERFORMANCE

The reliable safety concept  
for the median and the roadside.



**KIRCHDORFER**  
ROAD & TRAFFIC



**DELTA BLOC INTERNATIONAL GmbH**

Industriestrasse 28  
2601 Sollenau, Austria  
office@deltabloc.com  
+43 57715 / 470 - 0  
www.deltabloc.com