

SB 70P 6m MW1 80 N2 W1 B pinned on asphalt

K733182A

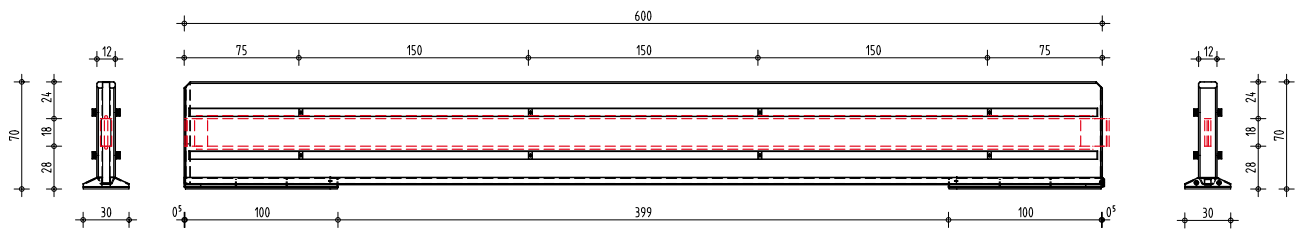
PRODUCT DATA SHEET

Performance class	N2 W1 B
Working width	0,6 m
Vehicle intrusion	- (- m)
Dynamic deflection	0,2 m
Tested system length	102 m
EC Certification report	92728

System series	SB 70 Series
Tension bar	MW180
Design	Generation 2

Element length	6 m
System height	70 cm
System width	30 cm
Element weight/length	1.235 kg / 6 m

Mode of operation	double sided
Mode of installation	pinned on asphalt
Additional features	with DB Mesh
Terminal anchoring	no
Installation drawing	K733182-EN



THE ULTRALIGHT SB SERIES PROTECTS WITH MODULAR SAFETY

The holistic safety concept
for a state of the art work zone protection.



KIRCHDORFER
ROAD & TRAFFIC



DELTA BLOC INTERNATIONAL GmbH

Industriestrasse 28
2601 Sollenau, Austria
office@deltabloc.com
+43 57715 / 470 - 0
www.deltabloc.com