

# DB 80 6m T180S L2 W5 B

surface mounted on asphalt

**K668533C**

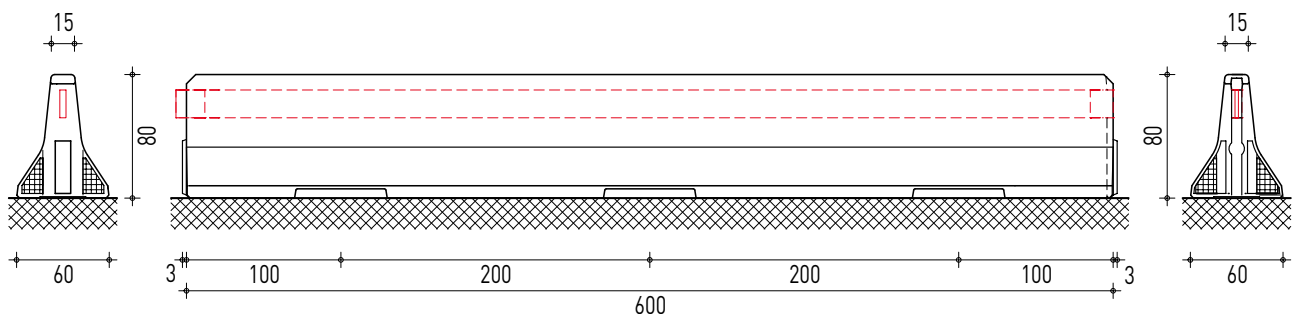
## PRODUCT DATA SHEET

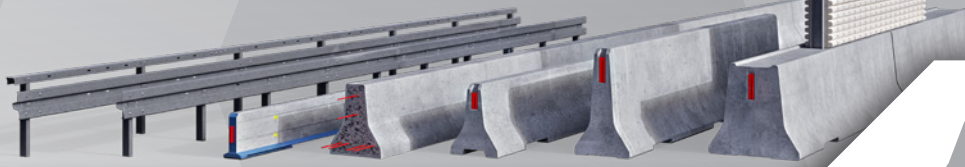
Performance class	L2 W5 B
Working width	1,7 m
Vehicle intrusion	VI5 (1,7 m)
Dynamic deflection	1,1 m
Tested system length	102 m
EC Certification report	725037644

System series	DB 80 Series
Tension bar	T180S
Design	Generation 2

Element length	6 m
System height	80 cm
System width	60 cm
Element weight/length	3.125 kg/6 m

Mode of operation	double sided
Mode of installation	surface mounted on asphalt
Additional features	standard mesh
Terminal anchoring	yes
Installation drawing	K668533-EN





# DB 80 6m T180S

## H2 W5 B

surface mounted on asphalt

**K668533A**

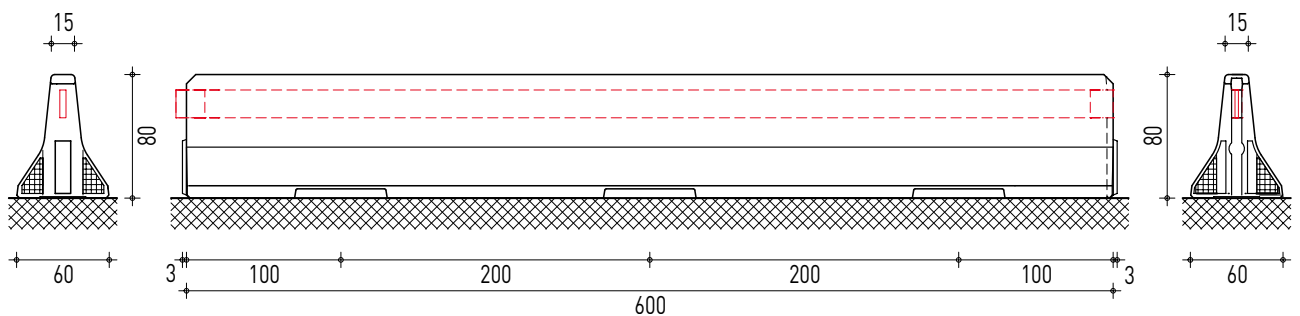
### PRODUCT DATA SHEET

Performance class	H2 W5 B
Working width	1,7 m
Vehicle intrusion	VI5 (1,7 m)
Dynamic deflection	1,1 m
Tested system length	102 m
EC Certification report	725037644

System series	DB 80 Series
Tension bar	T180S
Design	Generation 2

Element length	6 m
System height	80 cm
System width	60 cm
Element weight/length	3.125 kg/6 m

Mode of operation	double sided
Mode of installation	surface mounted on asphalt
Additional features	standard mesh
Terminal anchoring	yes
Installation drawing	K668533-EN



# THE NEW DB 80 SERIES PROTECTS WITH MODULAR SAFETY

The holistic H2 safety concept  
for the median, roadside and bridge.



**KIRCHDORFER**  
ROAD & TRAFFIC



**DELTA BLOC INTERNATIONAL GmbH**

Industriestrasse 28  
2601 Sollenau, Austria  
office@deltabloc.com  
+43 57715 / 470 - 0  
www.deltabloc.com