

DB 80E 6m K150S

H2 W1 B

embedded on asphalt

K683070A

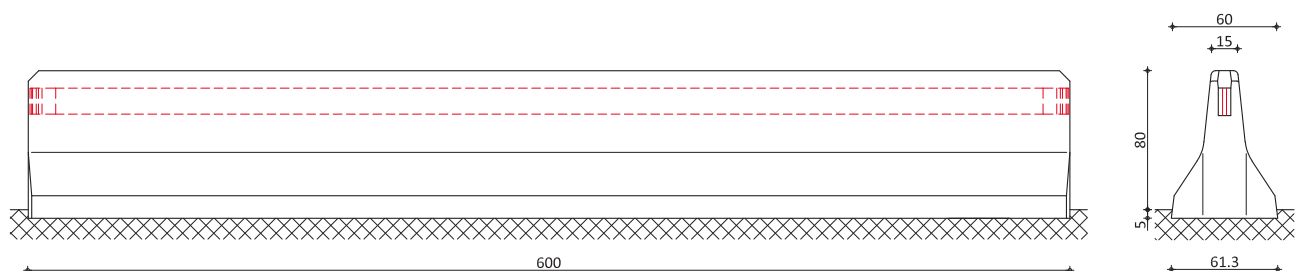
PRODUCT DATA SHEET

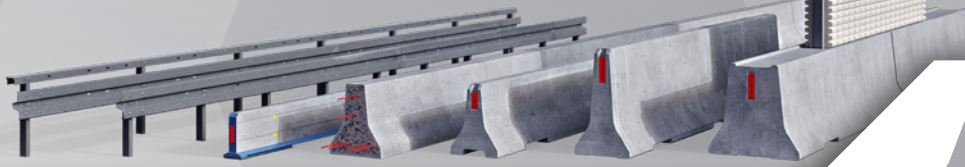
Performance class	H2 W1 B
Working width	0,6 m
Vehicle intrusion	VI1 (0,6 m)
Dynamic deflection	0,1 m
Tested system length	42 m
EC Certification report	62619

System series	DB 80 Series
Tension bar	K150S
Design	Generation 1

Element length	6 m
System height	85 cm
System width	61 cm
Element weight/length	3.940 kg/6 m

Mode of operation	double sided
Mode of installation	embedded on asphalt
Additional features	-
Terminal anchoring	no
Installation drawing	K683070-EN





DB 80E 6m T150S H2 W1 B embedded on asphalt

K706749A

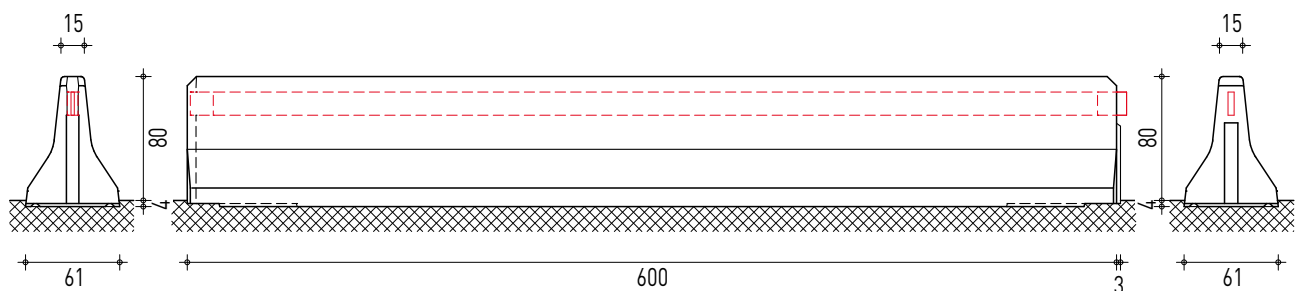
PRODUCT DATA SHEET

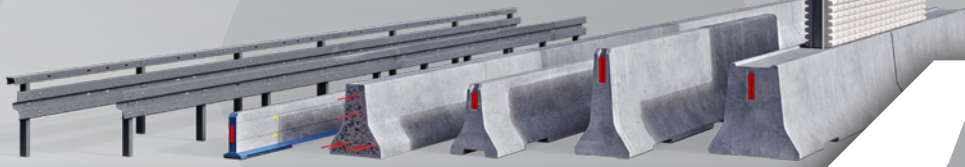
Performance class	H2 W1 B
Working width	0,6 m
Vehicle intrusion	VI2 (0,8 m)
Dynamic deflection	0,0 m
Tested system length	48 m
EC Certification report	68955

System series	DB 80 Series
Tension bar	T150S
Design	Generation 2

Element length	6 m
System height	84 cm
System width	60 cm
Element weight/length	3.410 kg/6 m

Mode of operation	double sided
Mode of installation	embedded on asphalt
Additional features	-
Terminal anchoring	yes
Installation drawing	K706749-EN





DB 80E 6m T150S H2 W1 B embedded on asphalt

K668688A

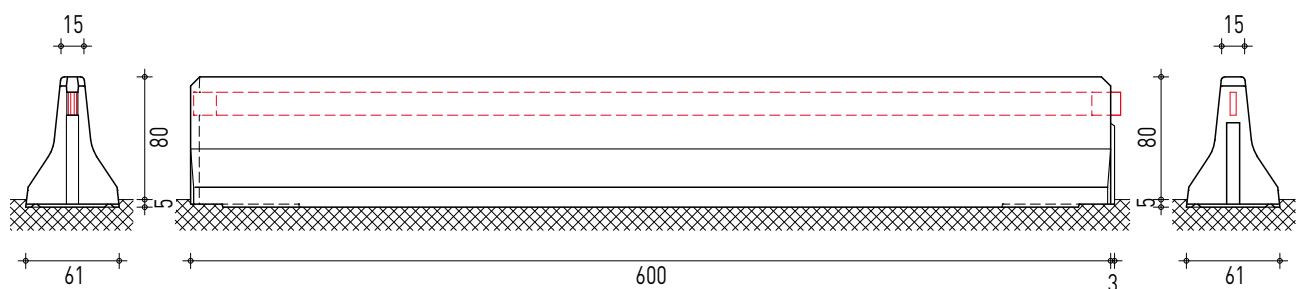
PRODUCT DATA SHEET

Performance class	H2 W1 B
Working width	0,6 m
Vehicle intrusion	VI1 (0,6 m)
Dynamic deflection	0,1 m
Tested system length	42 m
EC Certification report	60302

System series	DB 80 Series
Tension bar	T150S
Design	Generation 2

Element length	6 m
System height	85 cm
System width	60 cm
Element weight/length	3.480 kg/6 m

Mode of operation	double sided
Mode of installation	embedded on asphalt
Additional features	-
Terminal anchoring	no
Installation drawing	K668688-EN



THE NEW DB 80 SERIES PROTECTS WITH MODULAR SAFETY

The holistic H2 safety concept
for the median, roadside and bridge.



KIRCHDORFER
ROAD & TRAFFIC



DELTA BLOC INTERNATIONAL GmbH

Industriestrasse 28
2601 Sollenau, Austria
office@deltabloc.com
+43 57715 / 470 - 0
www.deltabloc.com