

DELTABLOC® EURO-RACCORD® EP 80Ba – SR-Eco

Technical Product Data Sheet

					L1	L2	L3	L4a	L4b
T1	T2	T3	N1	N2	H1	H2	H3	H4a	H4b

The new system transition EURO-RACCORD® EP 80Ba – SR-Eco was developed to connect the in-situ safety barriers of the DELTABLOC® EP 80 series to the SuperRail® Eco steel guardrail.

The transition connects safely the EP 80Ba H2 | W2 | ASI B with the SuperRail® Eco steel guardrail H2 | W4 | ASI B. It can be used on verges and in the central reservation of highways and motorways.

Main features

- ▶ high containment level and small working width (H2 | W3)
- ▶ completely tested safety
- ▶ simple and fast installation of the transition

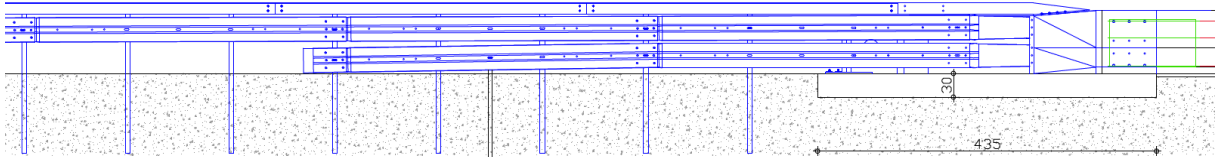


Technical specifications

Concrete specifications	resistant against frost and de-icing salt (depending on country-specific requirements)
SuperRail® Eco properties	construction as per TL-SP
Reinforcing steel strands	6x steel strands EP strand 140, galvanized or epoxy-coated (according to national requirements)
Construction method	In-Situ method
Connection options	from EP 80Ba - H2 W2 ASI B to SuperRail® Eco - H2 W4 ASI B

DELATABLOC® EURO-RACCORD® EP 80Ba – SR-Eco

Technical Specifications



Test results according to EN 1317-2

System	EURO-RACCORD® EP 80Ba – SR-Eco
Containment level	H2
Working width	W3
Impact severity level	C
Reinforcement	EP strand 140EC
System length	15.86m
Height (road surface)	80cm
System width	70cm
Anchoring in the ground	embedded and rammed

Key facts	System length	Performance Class	l / w / h
EURO-RACCORD® EP 80Ba – SR-Eco	15.86m	H2 W3 ASI C	1586 / 70 / 80cm